

Infrastructure Protection Division
Water Industry



Serving the Water Industry

Providing sustainable economic solutions for maintaining
and enhancing our critical water infrastructure

3M

Chemical Resistant Linings & Secondary Containment

3M™ Scotchkote™ Epoxy Coating 175UC

3M™ Scotchkote™ Epoxy Coating 162HB

3M™ Scotchkote™ Urethane Coating 165HB

3M™ Scotchkote™ Epoxy Coating 162CR

- Chemical resistant lining systems, for use in contact with a wide range of chemicals and solutions*

* Please check with 3M Technical Department in Northallerton for suitability, dependent on concentrations and operating temperatures



External Coatings of Tanks & Vessels

3M™ Scotchkote™ Epoxy Coating 152LV

3M™ Scotchkote™ Urethane Coating XF 129

- Long term maintenance free system
 - independently tested to 5000 hours salt spray
 - good long term colour stability

3M™ Scotchkote™ Encapsulation Coating Polynox 136

- Single component water based coating system - ease of application
- Good colour stability
- Flexible encapsulation coating



Pipe Bridges & Steel Structures

3M™ Scotchkote™ Epoxy Coating 152LV

3M™ Scotchkote™ Urethane Coating XF 129

- Long term maintenance free system
 - independently tested to 5000 hours salt spray
 - good long term colour stability

Pumps & Valves

3M™ Scotchkote™ Epoxy Coating KSIR88

3M™ Scotchkote™ WB Epoxy Coating EA5WB

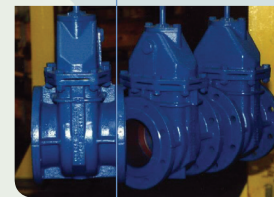
3M™ Scotchkote™ Ceramic Surfacers CR 511

3M™ Scotchkote™ Ceramic Rebuild EG 513

3M™ Scotchkote™ Epoxy Metal Repair EG 503

3M™ Scotchkote™ Fusion-Bonded Epoxy Coating 206N

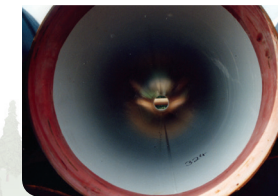
- Coatings in the range are suitable for contact with drinking water
- Ceramic filled to provide high levels of wear and abrasion resistance
- Engineering repair products to rebuild and resurface



Internal Linings for New Pipes

3M™ Scotchkote™ Epoxy Coating 162PWX

- Authorised for use under Regulation 31(4)(a) for contact with drinking water



In situ Lining of Small Diameter Lead Communication Pipes

3M™ Scotchkote™ Rapid Setting Polymeric Lining 166L

- Air vortex applied coating authorised for use under Regulation 31(4)(a) for contact with drinking water
- Can assist Water Utilities in meeting European lead legislation

Repair of Sunken Frames and Covers

3M™ Scotchkote™ Urethane Metal Repair RG 501



- Supplied as a manhole repair kit to facilitate fast repairs of sunken frames and covers
- Can be trafficked after 30 minutes cure

Internal Linings of Water Storage and Treatment Vessels

3M™ Scotchkote™ Epoxy Coating 162HB

3M™ Scotchkote™ Epoxy Coating 162PWX

- Internal lining systems with high levels of abrasion resistance and drinking water approval, where required



In situ Lining of Existing Potable Water Pipes

3M™ Scotchkote™ Pipe Renewal Liner 2400

3M™ Scotchkote™ Epoxy Lining Geopox GX014

- Internal rehabilitation of existing potable water pipes with minimal disruption, using fast setting return to service resins
- Approved for use under Regulation 31(4)(a)



External Pipe Coatings

3M™ Scotchkote™ Urethane Coating 165HB

3M™ Scotchkote™ Fusion Bonded Epoxy Coating 206N

3M™ Scotchkote™ Fusion Bonded Epoxy Coating 134W

3M™ Scotchkote™ Urethane Coating 352BG

3M™ Scotchkote™ Urethane Coating 165TG

- Liquid and powder coatings for long term corrosion protection of pipes
- Full coating systems, joint protection and repair solutions

Over the last fifty years, we have established ourselves as a leading manufacturer and worldwide supplier to the water services industry of high performance protective coatings.

From reservoir to tap, 3M provides a single source for coatings, linings, and asset management products to help you proactively address your water infrastructure challenges. Whether it's the long term protection of new assets or maintenance and rehabilitation of aging infrastructure, 3M Water Infrastructure has you covered.

3M Scotchkote branded products help provide long term maintenance-free protection of new and existing pipes, tanks, storage reservoirs and ancillary equipment such as pumps and valves. Whether in contact with clean or dirty water or process chemicals used in water treatment the unique product attributes address a wide range of application requirements including flexibility, adhesion, temperature performance, corrosion resistance and damage protection to suit even the harshest environments.

Whether used to help protect new assets or to rehabilitate aging infrastructure, 3M™ Scotchkote™ products are design to help improve both the longevity and efficiency of potable water and wastewater systems.

3M is dedicated to providing products that meet your water infrastructure needs.

Important Notice

All statements, technical information and recommendations are based on information believed to be reliable, but the accuracy or completeness is not guaranteed. Before using the 3M™ Scotchkote™ Product, you must evaluate it and determine if it is suitable for your intended application. Because conditions of product use are outside of 3M control's and vary widely you assume all risks and liability associated with such use. Any product related statements not contained in current 3M publications, or any contrary statements contained in your purchase order, shall have no force or effect unless expressly agreed to in writing by an authorised officer of 3M.

Warranty; Limited Remedy; Limited Liability

3M warrants that the 3M™ Scotchkote™ Product will conform to 3M published specifications upon shipment. If the product is proven not to have met the specifications your exclusive remedy within 12 months of sale by 3M of the product and 3M's sole obligation will be, at 3M's option, to replace the Product or to refund the purchase price of the Product. **Except where prohibited by law, this warranty is made in lieu of all other warranties, express or implied, including, but not limited to, any implied warranty of suitability or fitness for a particular purpose, or those arising from a course of dealing, custom or usage or trade.**

3M has no obligation under this warranty with respect to any product that has failed due to inadequate or improper storage, handling, surface preparation, application, or maintenance; failure to follow product instructions or recommendations or alteration or damage to the Product caused by accident, neglect, or misuse. OTHER THAN IN THE CASE OF DEATH OR PERSONAL INJURY CAUSED BY ITS NEGLIGENCE AND EXCEPT WHERE PROHIBITED BY LAW, IN NO EVENT SHALL 3M BE LIABLE FOR ANY DIRECT, INDIRECT, SPECIAL, INCIDENTAL OR CONSEQUENTIAL LOSS OR DAMAGES (INCLUDING LOST PROFITS) ARISING FROM THIS PRODUCT, REGARDLESS OF THE LEGAL THEORY ASSERTED.



Infrastructure Protection Division 3M United Kingdom plc

23 Standard Way
Northallerton
North Yorkshire DL6 2XA
t: +44 (0) 1609 780170
f: +44 (0) 1609 780438
e: enquiries.cpp.uk@mmm.com
www.3M.co.uk/scotchkote

3M Ireland Limited

The Iveagh Building
The Park
Carrickmines
Dublin 18
t: (01) 280 3555
f: (01) 280 3849
www.3M.co.uk/scotchkote

16910
3M and Scotchkote are trademarks of 3M Company
CPP-WAT v2 /0413

Please recycle. Printed in UK.
© 3M 2013. All rights reserved.

