

PARTS LIST FOR PT# 20232 & 25125, 15000 RPM, 3", 1 HP DISC SANDER

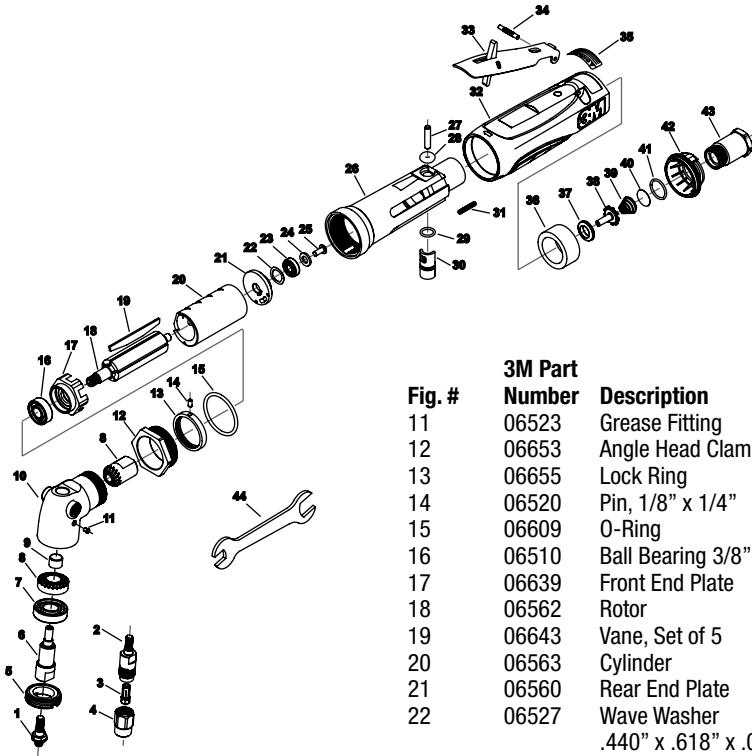


Fig. #	3M Part Number	Description
1	06582	Sander Adapter
2	06583	Collet Body
3	06528	Collet (1/4")
3	06529	Collet (1/8")
3	06530	Collet (3/16")
3	06540	Collet (3 mm)
3	06541	Collet (6 mm)
4	06516	Collet Nut
5	06578	Bearing Retainer
6	06591	Output Shaft
7	06507	Ball Bearing
8	06646	Spiral Bevel Gear Set
9	06505	Needle Bearing
10	06637	Angle Head Assembly (Includes Figures 9 & 11)

Fig. #	3M Part Number	Description
11	06523	Grease Fitting
12	06653	Angle Head Clamp Nut
13	06655	Lock Ring
14	06520	Pin, 1/8" x 1/4"
15	06609	O-Ring
16	06510	Ball Bearing 3/8" x 7/8" x 9/32"
17	06639	Front End Plate
18	06562	Rotor
19	06643	Vane, Set of 5
20	06563	Cylinder
21	06560	Rear End Plate
22	06527	Wave Washer .440" x .618" x .008"
23	06508	Ball Bearing
24	06567	Washer .251" x .468" x .063"
25	06568	Screw #8-32 x 3/8" But Hd Cap
26	06638	Housing
27	06558	Torr Pin, 3/16" x 7/8"
28	06543	O-Ring
29	06511	O-Ring
30	06556	Regulator
31	06501	Screw, 6-32 x 3/4" Set Soc Hex
32	06598	Housing Cover
33	06642	Lever
34	06559	Groove Pin, 1/8" x 7/8" Type E
35	06566	Warning Label
36	06557	Muffler
37	06552	Throttle Valve Seat
38	06553	Throttle Valve
39	06554	Taper Spring
40	06555	Screen
41	06608	O-Ring, 1/16" x 5/8" x 3/4"
42	06604	Rotatable Exhaust Deflector
43	06605	Inlet Bushing
44	06586	7/16" x 11/16" Wrench (2)